



WORKSHOP EQUIPMENT

STEEL GARAGE JACK WITH DUAL PUMP 2.5 T

Proven maximum reliable of hydraulic unit with features on professional daily use in garages

Extra low profile, ideally for low vehicles
Thanks to its 7.5 cm of ground clearance

Double pump for fasting lifting
Prevents overloading

Safety pressure relief valve
Prevents damage to vehicle

Rubber contact pad
Designed with 2-piece handle with practical twist locking and release for easy move

Application area
2.5 Ton capacity with low profile is an essential jack for application on all the sedan in a garage even in mobile service stations



Technical Data	
Load capacity	2.5 t
Min. height (A)	75 mm
Max. height (B)	515 mm
Width	328 mm
Length	722 mm
Height	150 mm
Number of rolls	4 PCS
Colour	Red
Material	Steel
Product weight (per item)	33.800 kg



GARAGE JACK CARGO HEAVY DUTY

Ideal for lifting heavy trucks, buses, agriculture and constructions equipments

Maximum durability
Heavy duty steel frame for maximum durability

Easy access lift point
Long frame

Safety overload system
Quick set-up and rise

Thanks to additional foot pedal control
Easy mobility

Oversized swivel casters



Technical Data	
Load capacity	10 t
Min. height (A)	160 mm
Max. height (B)	560 mm
Width	486 mm
Length	1540 mm
Height	160 mm
Number of rolls	4 PCS
Colour	Red
Material	Steel
Product weight (per item)	129 kg

SHOP ENGINE CRANE

Foldable for easy storage

- Designed for shops with limited space
- Heavy steel construction for maximum durability
- Boom is reinforced to increase strength and eliminate vibration with telescoping at 4 positions.
- Rugged hydraulic cylinder
- Heavy-duty steel casters for easy positioning
- Front casters include a safety brake to prevent movement
- Includes heavy steel hook with safety latch
- Wide base for maximum stability



Technical Data	
Load capacity	2 ton
Min. height (A)	25 mm
Max. height (B)	2435 mm
Width	630 mm
Length	1550 mm
Height	160 mm
Surface	Lacquered/plain
Material	Steel
Product weight (per item)	101 kg

ENGINE STANDS

Quality and durability

Constructed of high-grade steel

Ensure a long-lasting finish and to help prevent rust

Lead-free paint finish is applied

Stability when needed

360° rotating head locks with a pin

Easy engine rotation

Long handle with rubber grips

Space saving

Foldable



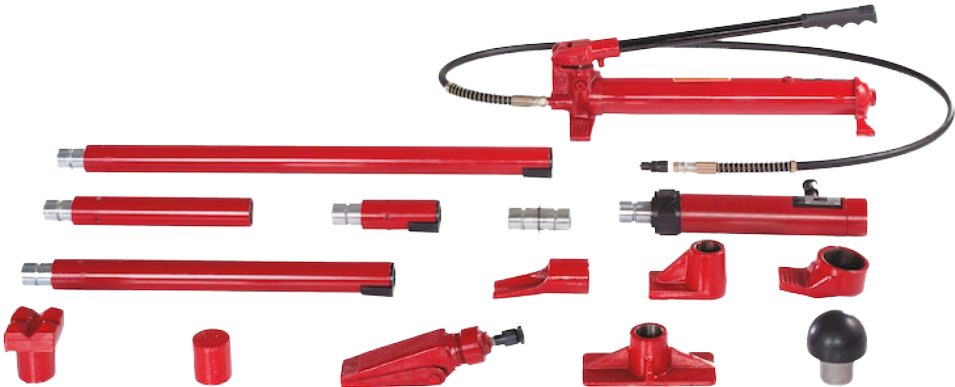
Technical Data	
Min./max. height	860-860 mm
Width	250 mm
Load capacity	680 kg

**BODYWORK STRAIGHTENING TOOL, DENT REPAIR
SET 15 PIECES**

**For heavy bodywork pressing tasks
Push-fit connection for faster assembly**

Scope of delivery:

- 1x hand pump with hose (1)
- 1x 152 mm stroke pressure cylinder (2)
- 1x extension pipe 100 mm (5), 1x 250 mm (4), 1x 450 mm (6)
and 1x 700 mm (3)
- 1x pipe connection (7)
- 1x pressure piece wedge attachment (8)
- 1x piston rod attachment (9)
- 1x cylinder attachment (10)
- 1x pressure piece prism attachment (11)
- 1x grooved pressure piece (12)
- 1x spreader (13)
- 1x base plate (14)
- 1x rubber cap (15)
- 1x metal case



Technical Data	
Max. lifting capacity	10 t
Product weight (per item)	36000 g

ELECTRICAL BRAKE BLEEDER ABSG

Especially sturdy, high-quality device. For bleeding passenger car brakes and lorry clutches. Easy to use and easy to service. Suitable for electro-hydraulic brakes.

Pressure continuously adjustable from 0.4 to 4 bar

Suitable for all vehicles with ABS (specified operating pressures).

Works from the original canister up to 12 litres

No time-consuming decanting and no danger of moisture absorption.

Switches off when canister is empty to prevent air from being drawn in

No time-consuming bleeding of device necessary when changing container.

Additional low-pressure test

Simple and rapid brake system leak test and checking of brake pistons for smooth movement.

Mobile device with controls at working height

Fatigue-free, comfortable working.

High-quality epoxy coating

Especially resistant to brake fluid.



Technical Data	
Max. contents	12 l
Min./max. operating pressure	0.4-4 bar
Length of feed hose	350 cm
ABS-compliant	Yes
Suitable for electro-hydraulic brakes	Yes
Length	340 mm
Width	290 mm
Cable length	450 cm
Height	980 mm
Nominal voltage	230 V/AC
Weight	12 kg

Scope of delivery:

- Cart with adapter storage compartment
- Universal cone for canister seal
- Suction device for preliminary draining
- Euro adapter art. no. 071455 301 (E 20 for many European passenger vehicles)

Art.No. 071455624

Filter for electrical brake bleeder
Art.No. 0714556211



Adapter case with
4 special adapters
Art.No. 071455 325



HEAVY DUTY BENCH VICE 7 INCHES

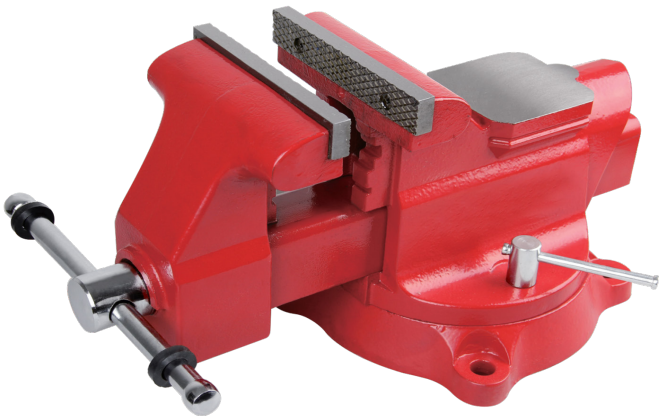
The Würth Bench Vice is a heavy-duty tool designed for secure clamping, precision, and durability in workshop applications. Built with robust materials, it ensures reliable performance under high stress.

Specifications :

Made of high-quality Cast Iron HT200, powder-coated for corrosion resistance and long-lasting durability.
Handle and screws are chrome-plated for added strength and smooth operation.

Key Features:

- Replaceable Jaws – Hardened steel jaws for extended service life.
- Large Anvil – Provides a strong working surface for hammering and shaping.
- Built-in Pipe Jaws – Ideal for gripping round objects securely.
- 360° Swivel Base – Made from ductile iron, allowing flexible positioning and secure clamping.
- High-quality Steel Plate Beam – Adds extra stability and strength.



Technical Data	
Material	Cast Iron
Jaw Width	150 mm
Jaw Opening	178 mm
Throat Depth	107 mm
Anvil dimensions	90 × 100 mm
Pipe Jaw Capacity	Ø17 - 88.5 mm
Base	360° Swivel Base
Clamping Force	3000 kg
Weight	24 kg

MOBILE HAND OIL PUMP

Oil pump filling appliance hand operated 24 liters Hand Oil Pump with tank

Tank capacity 24 L

Easy manipulation

Has wheels

- Quantity deliverable with complete cycle of lever - 220 g
- Oil dispensing hose 2m with metal fitting
- Max. oil viscosity: SAE 240



Technical Data	
Material	Steel
Material of gasket	Nitrile butadiene rubber (NBR)
Lid diameter	400 mm
Height	520 mm
Product weight (per item)	12 kg

WHEELED GREASE PUMP FOR BARRELS 200 LITER

Pneumatic Grease Pump suitable for barrel 180 -220 kg, equipped with Powerful Pump with pumping ratio of 60:1+5 meter hose and 3 wheel trolley , making the machine the right choice for the heavy industrial use.

Consist of:

- Air-operated grease pump ratio 60:1 / 12-16 kg
- Follower plate for pumps with shank Ø 30 mm
- Grease control gun with flexible hose and 4-jaws coupling
- 4) R2 hose 1/4" M-F length 3m
- 5) Wheeled tank for 16 kg

Technical Data	
Pumping ratio	60:1
Operating Pressure	2.5 - 8 Bar
Shank length	950 mm
Number of wheels	3
Hose Length	5 M
Capacity	180 - 220 KG barrels



MUDGUARD PROTECTOR, SYNTHETIC LEATHER

Protects against damage during maintenance and repair work

- With sewn-in magnetic clamps for steel bodywork
- Suitable for almost all vehicle types
- Outer material: Robust, black imitation leather



Technical Data		
Art.No.	0899 600	0899 601
Product weight (per item)	440g	1210g
Inner material	Magnetic	Sand
Length	1100 mm	1100 mm
Width	700 mm	700 mm
Material	Faux leather	Faux leather
Colour	Black	Black

UNIVERSAL CAR FRONT PROTECTOR

Prevents scratches to paintwork which can occur while working on vehicles through dropped tools and component installation. Supplied in practical carrying bag.

Test drive and light check can be carried out with cover attached

Large, transparent cut outs on headlights and radiator grille

Protects over a wide area

Allows work to be carried out around the engine bay without time-consuming re-adjustment of the cover

Adapts perfectly to various types of bodywork

Rubber straps can be attached around the engine bay simply and conveniently.

Washable

The removable fleece lining can be washed in the washing machine.

Application area

Universal protection for mudguards, radiator grille, bumper and lights on small cars, medium-sized cars and SUVs



SK 80 SELF-ADHESIVE PROTECTIVE FILM

**For protecting and covering delicate surfaces.
Application is clean, quick and easy**

- Self-adhesive
- No scratches or damage to surfaces when applying the film
- Easy to remove the film without leaving any adhesive residue
- Recyclable (environmentally friendly disposal)

Reliable protection

Largely resistant to chemical influences, mechanical damage and moisture.

Notice

The films are not intended for long-term protection of surfaces beyond the specified protection period. They are intended for indoor and outdoor use and must be removed once the specified application time has passed. Films are not suitable for use in large-scale forming processes. We do not accept liability for improper use and resulting damage. We recommend that preliminary tests be performed in all cases. Never remove the film using a jerky motion (pull-off angle below 90°). Cannot be used for copper and brass. Not suitable for laser-cutting technology. UV-resistant. Max. storage period: 12 months. Maximum application time on the object: 6 weeks.

Application area

Protects delicate surfaces from contamination and damage during processing, storage, transport and assembly. Suitable for the protection of smooth to slightly textured metal surfaces, PVC profiles, painted surfaces (cured) and aluminium (high-gloss, brushed, ground, anodised) SK 80 is mostly resistant to mechanical damage and moisture.

Instructions

Surfaces must be free from oil, dust, grease and solvents.
Application temperature: >5°C. For more information, please refer to the technical data sheet.



Technical Data

Material	PE - Polyethylene
Length	100 m
Width	500 mm
Min. processing temperature	5 °C
Min. temperature resistance	-40 °C
Max. temperature resistance	60 °C
Color	White



STEERING WHEEL PROTECTOR PE-STRETCH FILM W. HANDLE

Transparent stretch film with red interchangeable handle

- Everything can be packed quickly and easily with the mini-size stretch film
- The dispenser is very handy, lightweight and extremely robust
- One roll is sufficient for approx. 215 steering wheels
- Continuous film suitable for all steering wheel types



Technical Data	
Material	LDPE - Low density polyethylene
Length	300 m
Width	125 mm
Number of foils	2 pcs
Number of handles	1 pc



SEAT COVER

Seat protector made of LDPE (low density polyethylene), flexible and very practical.
Rolls with 500 pcs, perforated, dimensions 820x 1,300 mm

Application area

For protecting seats during repair, maintenance and cleaning work in the vehicle interior.



Technical Data	
Material	MDPE - Medium-density polyethylene
Colour	White
Dimensions	820 x 1,300 mm
No. of pcs	500 pcs



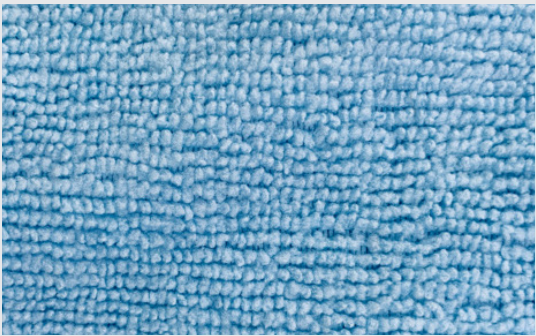
MICRO-FIBRE CLOTH UNIVERSAL

Premium unmatched 80/20 polyester/polyamide weave

- High clean power
- Extremely fine and strong fibres
- Super-absorbent micro fiber cleans without damaging, lint free and non-abrasive
- Size: 40 x 40cm
- Material: 80% polyester and 20% polyamide



Technical Data	
Material	Polyester fibre
Length x width	40 x 40 cm
Colour	Blue
Product weight (per item)	41.600 g
Total absorption time	30 s
Absorption in 10 seconds	20 %
Max. absorption	40 %



CLEANING PAPER

- Highly absorbent
- Fits all common dispensers
- In various plies and widths
- Virtually lint-free
- Compatible for use with food
- High absorption capacity and tear-resistant

Application

The cleaning paper is suitable for cleaning surfaces in a range of fields (vehicles, metalwork, kitchen construction). Soiling such as oil and grease can be removed with the cleaning paper. Due to the high strength of the cloth, surfaces can also be cleaned of coarse materials such as chips and edges.

Area of use

- Sealing of expansion joints indoors
- Without primer: Most types of metals, wood, glass, enamel, tiles, hard PVC
- With primer: Concrete, chalky sandstone, clinker, brick, gypsum, plaster.

Instructions

Clean surfaces with the cleaning paper. It is possible to increase the cleaning effect of the cloth by using Würth cleaning agents.



Technical Data	
Material	Mixture of waste paper
Design	Roles ware
Colour	Blue
Sheet length x sheet width	36 x 37 cm
Length of roll	360 m

CLEANING PAPER STAND

Specification

Floor stand for cleaning paper rolls with wheels and waste bag holder
Stable and durable
Suitable for all common wiper and cleaning rollers

Application area

Workshops and factories, large kitchens/canteens. Suitable for use in any area where cleaning paper rolls are used.

Instructions

The dispenser is equipped with a waste bag holder and its wheels make it easy to transport.

Technical Data	
Material	Plastic / metal
Design	With wheels and rubbish bag holder
Colour	Red
Width	56 cm
Height	88 cm
Depth	68 cm
Roll width	38 cm

Art.No. 0899 800606



WALL-MOUNTED ROLL HOLDER

Specification

For cleaning paper rolls with waste bag holder
Stable and durable
Suitable for all common wiper and cleaning rollers

Technical Data	
Material	Plastic / metal
Design	With wheels and rubbish bag holder
Colour	Red
Width	50 cm
Height	32 cm
Depth	63 cm
Roll width	38 cm

Art.No. 0899 800607



ENGINE COMPRESSION TESTER

The Engine Compression Tester is a professional-grade tool designed for accurately diagnosing and maintaining the performance of internal combustion engines. Essential for automotive technicians and enthusiasts, this tool enables precise measurement of cylinder compression, helping identify engine health issues such as worn piston rings, leaking valves, or blown head gaskets.

Equipped with high-tension hoses, quick coupling adaptors, and a calibrated air gauge, the Engine Compression Tester ensures reliable performance and easy handling. Its compatibility with a wide range of engine types makes it an indispensable addition to any toolkit, facilitating efficient troubleshooting and engine maintenance.

Whether used in routine diagnostics or advanced repair work, the Engine Compression Tester delivers the precision and durability needed to keep engines running smoothly and efficiently.



Technical Data		
Contents	PCS	Size
ADAPTOR	4	M10*1.25 , M12*1.25 , M14*1.25, M18*1.5
AIR GAUGE WITH QUICK COUPLING & RELEASE VALVE	1	0-300psi/0-20bar
HIGH-Tension Connecting Pipe with Safety Lock Coupling	1	-
Crankshaft Type Test Pipe with Rubber Plug	1	-
Transverse Axis Test Pipe with Rubber Plug	1	-

OIL FILTER WRENCH 31 PCS

The Oil Filter Wrench Set is a professional-grade toolkit designed to simplify the process of removing and installing oil filters across a wide range of vehicles. Featuring a comprehensive selection of precision-engineered wrench caps, this set ensures compatibility with various oil filter sizes and types, providing a perfect fit to prevent slippage or damage during use.



Technical Data		
OIL Filter Wrench	DIA 64-65 TEETH:14	Lexus
	DIA 64-65 TEETH:14	Lexus
	DIA 64-65 TEETH:14	Previa, Aeolus, Camry, Bluebird, TOYOTA A8, Chery, Geely, HONDA, Meiri
	DIA 86-87 TEETH:16	BMW
	DIA 66-67 TEETH:14	Mazda, Geeley, Ford, Hyundai, Suzuki, BYD
	DIA 84 TEETH:14	Benz
	DIA 73-74 TEETH:14	Benz, Hyundai, Kia, VW, Chery, BORA, Golf, Jetta, Fiat, Santana, Passat, Eagle, BMW, AUDI
	DIA 75-76 TEETH:15	GM, Chrysler, Ford, Mazda
	DIA 74 TEETH:8	Fiat, Audi, VW
	DIA 73-74 TEETH:15	GM, Chrysler
	DIA 72-73 TEETH:14	Lexus, Previa, Crown, Vios, Toyota, Bluebird
	DIA 77 TEETH:12	Renault
	TEETH 78-79 TEETH:15	Kia, Hyundai, Toyota, Great Wall, Ford, Mitsubishi, Nissan, Suzuki
	905,TEETH 73	Buick, GM, Mitsubishi, Chrysler
	DIA 74-75 TEETH:14	POLO
	DIA 86 TEETH:18	Peugeot, Renault, Citroën
	DIA 88-89 TEETH:15	Isuzu, Honda, Mitsubishi
	DIA 90-91 TEETH:15	Toyota, Bluebird
	DIA 92-93 TEETH:15	Jeep, Honda, Toyota
	DIA 93-94 TEETH:15	Crown, Toyota, GM, Ford, Chrysler
	DIA 80 TEETH:12	Ford, Mazda, Mitsubishi, Peugeot, Renault, Citroën
	DIA 79-80 TEETH:15	Great Wall, Toyota, Mitsubishi, Jeep, Bluebird, Honda, Suzuki, Nissan
	DIA 101 TEETH:15	Mazda, Mitsubishi, Toyota
	DIA 91-92 TEETH:15	JMC
	DIA 89 TEETH:12	ChangAn
	DIA 27 TEETH:6	Benz
	DIA 32 TEETH:6	GM-SATURN
	DIA 36 TEETH:6	Benz, Audi A6L, BMW/M52M60 M73 VW
Oil Double Ring Wrench	251mm	-
Chain Filter Wrench 65-85mm	65-85mm	-
Chain Filter Wrench 80-100mm	80-100mm	-

COOLING SYSTEM VACUUM FILLING DEVICE

- Quickly refill entire cooling system without bleeding or purging to remove air pockets
- Includes flexible hose for hard-to-reach connections and easy-to-read instructions
- Universal adaptors for most cars, SUVs, and light trucks’ coolant systems
- Comes with heavy-duty blow-molded plastic carrying case for easy transportation and storage
- Pressure gauge with rubber protective sleeve and pressure relief valve for safety



Technical Data		
Contents	PCS	Size
Universal Adapter	1	highly applicable to a variety of Vehicles, and easy to assemble and operate
Vacuum Coolant Tool	1	The pressure gauge has an indicating range of -30 to 0 inHg (-76 to 0 cmHg). Under normal circumstances, the optimal range to add coolant is between -25 and -20 inHg.
Coolant hose	1	

COOLING SYSTEM TESTER 28PCS

The Cooling System Tool Kit is a versatile solution for maintaining vehicle cooling systems with precision. It includes a radiator pressure tester, vacuum coolant refill tools, a stainless steel needle thermometer, and adaptable test caps compatible with various vehicle models. Packaged in a durable, portable case, this kit is perfect for automotive professionals and enthusiasts, offering efficient tools for leak detection, maintenance, and diagnostics.

Technical Data		
Manual Radiator Pressure Test	NO 027-1, 0 - 35psi/0 - 2.5bar	with quick coupling and pressure relief valve, tester can quick test cooling system leak status in several minutes
Stainless Steel Needle Thermometer	NO 027-2, 0 - 200°C/32 - 400°F	Real-time Measurement/Corrosion Resistant
Vacuum Type Cooling system purge and coolant refill tool	NO 098 - 1	The indicating range of the pressure gauge is -30 ~ 0 inHg (-76 ~ 0 cmHg), and under normal circumstances, -25 ~ -20 inHg is the best time to add coolant.
Universal Adaptor	NO 098 - 2	Most Vehicles
Coolant Hose	NO 098 - 3	
test cap adaptor	NO3	Oldsmobile, Pontiac, BUICK, Chevrolet, Chrysler, Dodge, GM, JEEP, BENZ
test cap adaptor	NO4	Ford, Holden, Hyundai, Isuzu D-Max, Kia, Mazda, Mitsubishi, Nissan, Subaru, Suzuki, Toyota
test cap adaptor	NO5	Mitsubishi, Chrysler, Acura, Lexus, Kia, Mazda, Suzuki, Honda, Toyota, Chevrolet, Eagle, Geo, Isuzu, Dodge (Colt: 1993-1994)
test cap adaptor	NO6	Ford, Benz, GM, Mercury, Pontiac, Porsche, Saab, Saturn, Cadillac, Daewoo, Jaguar, Land Rover
test cap adaptor	NO7	Volvo, Saab, Sterling, Citroen, Renault, Fiat, Alfa, Jeep, Mini, Peugeot
test cap adaptor	NO8	VW
test cap adaptor	NO9	audi, BMW, VW, Porsche
test cap adaptor	NO10	BMW
test cap adaptor	NO11	compatible with VW, Audi
test cap adaptor	NO12	Ford Mondeo, International, Land Rover, Opel, Sangyong Motor
test cap adaptor	NO13	Benz, Chrysler
test cap adaptor	NO14	Ford Mondeo, Focus, C-MAX03
test cap adaptor	NO15	Mazda
test cap adaptor	NO16	Mercedes
test cap adaptor	NO17	BMW E60, E63, E64, E65
test cap adaptor	NO18	VW sharon
test cap adaptor	NO19	Compatible with Toyota, Celica, RAV4, Previa, MR2
test cap adaptor	NO20	Saab
test cap adaptor	NO21	Chevrolet, Buick, Cadillac, Ford, Saab, GMC, Suzuki, Vauxhall, Mazda, Opel, Fiat, Lincoln, Oldsmobile, Isuzu, Hummer
test cap adaptor	NO22	Compatible with :Land rover, BMW, MINI
Car Adaptor	NO30: No.3 (R123), No.4 (R124)	
Car Adaptor	NO31: No.3 (R123), No.5 (R125)	



Art.No. 1800 881028

PNEUMATIC HOSE REEL

**Practical reel winder with high-quality hybrid polymer hoses in different sizes.
Order and safety at the workplace.**

Rugged, closed plastic housing.

Hose and winding mechanism are protected against dust and other soiling.

High-quality hybrid polymer hoses.

Oil-resistant with an extremely low weight.

Excellent behavior in low and high temperature range.

High flow capacity of hoses.

No pressure drop for increased efficiency and lower costs.

Wall, ceiling and floor mounting possible.

For universal use without additional changes.

180-degree swinging mechanism.

High freedom of movement and operating comfort.

Notes: Solvent (such as diesel oil) could harm the hose.



Technical data

Designation	Art. 0699 010 15
Max. working pressure in bar	20
Inside hose diameter in mm	9.5
Outside hose diameter in mm	15
Hose length	15 m
Supply hose	90 cm
Connection	R 3/8" male thread
Temperature range	-10°C to +60°C
Dimension (L × W × H in mm)	367 × 191 × 367
Weight in kg	7.2

Delivery scope

Reel winder in housing	•
Hose	•
Adapter with male thread	R 3/8"
Supply hose with male thread adapter	R 3/8"
Stopper ball	•
Wall holder	•
Installation/Instruction manual	•

Art.No. 0699 01015



- Hoses and cables lying on the ground present a considerable source of danger and can result in accidents.
- Eliminate obstacles that can cause tripping at your company and help prevent accidents (accident prevention regulations).
- Hoses which constantly lie on the floor or on a workbench are damaged more easily and must be replaced more often.
- Hose reels prevent this kind of damage, as the hose is always only unrolled for use.

PNEUMATIC HOSE WINDER DSA-S

Practical safety hose winder with high-quality polyurethane hose for order and safety in the workplace

Safe and comfortable work

The hose is guided from left to right while being wound up, preventing knots. The brake function minimises the risk of the hose being flung around in an uncontrolled manner if it is inadvertently released.

Protection against pollution

The robust, enclosed plastic housing protects the hose and the rolling mechanism from dust and other contaminants.

High resistance to kinking with an extremely low weight as well as resistance to oils and solvents. Excellent behaviour in low and high temperature ranges.

High-quality polyurethane hose (PUR)

No pressure drop for more efficiency and cost savings

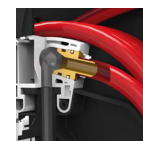
Hose has a high flow capacity as well as an innovative connection valve on the reel unit

Can be mounted on the wall, ceiling or floor

Bracket ensures a secure attachment to straight surfaces.

Low maintenance costs

Hose can be replaced without opening the housing.



Supply-hose length	1.5 m
Hose length (from stopper ball)	25 cm

RECHARGEABLE HAND LAMP LED

Latest lithium-ion battery technology

- Short charging time, long light duration

Boost function

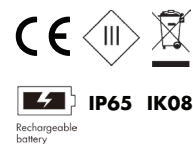
- Boost main light function with 1000 lumen output delivered

Features

- Exclusive Würth design
- Two-component housing with good grip
- IP65 protection against water and dust
- One hooks for high flexibility
- Wrist strap
- Main light 5W SMD LED, spot light 1W LED
- Spot light above the luminaire head – flashlight function
- Switch mode – spot light, main light, off
- Luminaire head can be swiveled by 160°
- Battery charging status by three indicator lights
- Strong magnet on the bottom and back of the light
- Latest lithium-ion battery technology
- Short charging time, long light duration

Includes

- Country versions: delivered with Lamp, Micro USB cable, AC/DC adapter, car charger
- Global version: delivered with Lamp and Micro USB cable



Technical data	
Luminous flux (Main light)	500 ml
Luminous flux (Spot light)	300 ml
Luminous flux (Main light Boost)	1000 ml
Luminous Period (Main light Boost)	2.5 h
Luminous Period (Main light)	5 h
Luminous Period (Spot light)	8 h
Charging Time	5 h
IP protection class	IP 65
Rechargeable battery	4200 mAh
Length x width x height	275 x 56 x 38 mm

INFRARED LASER THERMOMETER

For contact-free measurement of surface temperatures, with integrated laser pointer

Features

- Ergonomic, practical and suitable for use anywhere
- Easy measurement of temperatures in just seconds
- Thanks to the two-point laser beam, the measuring point can be focused even more precisely
- Reliable, precise measurement
- Extremely slim measuring cone of 12:1
- The slimmer the measuring cone, the more accurate the measuring result (e. g. for a distance of 12 cm, the measuring diameter is 1 cm)
- Digital setting of degree of emission
- Variable between 0.1 and 1.0 (factory setting 0.95)
- Can be switched from Celsius to Fahrenheit
- Eliminates complicated conversions
- With integrated display lighting
- Results displayed to one decimal place
- Adjustable alarm with extremely high or low temperatures
- Between -50°C and +650°C



Infrared laser thermometer is supplied in a practical pouch that can be fastened to the belt.

Technical data	
Min./max. temperature measuring range	-50 to 650 °C
Thermometer measuring cone	12:1
Nominal voltage	9 V/DC
Min./max. spectral range	8-14 µm
Reaction time	150 ms
Automatic switch-off	5 S
Battery designation	9 V block; PP3; F22



MINI DIGITAL MULTIMETER

Small measuring instrument for measuring direct and alternating current, resistance testing, continuity testing, diode testing and contactless voltage testing

- The measuring leads can be fastened to the rear of the device; this protects them from damage and prevents injury from the measuring tips
- Permanently attached test leads, data hold, diode testing, continuity testing, integrated LED torch and automatic range detection
- With robust, splash-proof rubber housing and membrane keyboard
- Contactless voltage testing
- Automatic switch-off of device after 15 minutes



Technical data

Display	LCD 2000 digits
Min./max. voltage measuring range	0.5 V/AC-600 V/AC
Min./max. voltage measuring range 2	0.5 V/DC-600 V/DC
Min./max. electrical-resistance measuring range	0 Ohm-20 MOhm
Automatic switch-off	15 min
Overvoltage protection category	CAT III/1000 V
IP protection class	IP 54
Battery designation	15 min
Number of rechargeable batteries/batteries	2 PCS
Length x width x height	104 x 55 x 32.5 mm



PROFESSIONAL DIGITAL MULTIMETER

Versatile TRMS multimeter, provides the most important functions for daily use in skilled trades, business and industry. For maintenance, installation, service. Robust due to shock-proof cover.g

- Measurement of voltage: AC, DC
- Measurement of current: AC, DC, from as little as 10 μ A
- Measurement of resistance, capacitance, temperature
- Audible continuity testing, diode test
- Voltage measurement with low impedance (VLOWZ = 500 kOhm), adjustable
- Non-contact voltage indicator (NCV): Displayed in red for hazardous voltage
- Built-in LED for simplified working in dark environments (illuminates the measuring point)
- Large backlit LCD display for optimum readability
- Resolution of 6000 digits for high accuracy
- Automatic range selection, AC/DC – detection and shutdown
- Fuses are very easy to change
- Attachment of the device to switch cabinets, metal doors with magnets in the shock protection cover
- Adjustable folding support enables installation at different angles of inclination
- Holder for test tips with 19 mm spacing simplifies measurement at sockets



Technical data	
Display	6000 digits
Min./max. voltage measuring range	0.6 V/AC-750 V/AC
Min./max. voltage measuring range 2	0.6 V/DC-1000 V/DC
Min./max. current measuring range	10 μ A/AC/DC-10 A/AC/DC
Min./max. electrical-resistance measuring range	1 Ohm-60 MOhm
Min./max. capacity measuring range	1 nF-100 MF
Min./max. temperature measuring range	-55 to 1200 °C
Automatic switch-off	Yes
Overvoltage protection category	CAT III/600 V
IP protection class	IP 54
Battery designation	1.5 V LR6 AA
Number of rechargeable batteries/batteries	2 PCS
Length x width x height	165 x 80 x 45 mm



BATTERY/CHARGING SYSTEM TESTER WITH THERMAL PRINTER

Intelligent battery and charging system tester for simple, fast and accurate testing of starter batteries with integrated thermal printer

- Testing of batteries from 6 to 12 volts and testing of charging systems (alternators) at 12 and 24 volts
- Checking the battery status (SOC), status of charge (SOH), cold start current (CCA), starting voltage and diode ripple
- Reverse polarity protection prevents accidents when connecting clamping pliers
- Minimal effort required as removal of the battery is not necessary
- Battery tests can be carried out with the customer present and necessary measures can be decided on immediately
- Battery test can be documented immediately using integrated thermal printer with personalised printouts
- Test does not affect charge status of battery
- Operator errors are avoided as the device automatically adjusts the test criteria and test time
- Voltage measurement from 1.5 to 30 V
- Fully insulated, high-quality clamping pliers
- 16-digit LCD display with background lighting
- Display can be adjusted to the lighting conditions
- Multilingual menu guidance and printout



Test standards (test ranges):

- CCA/SAE (40 - 2000)
- EN (40 - 1885)
- DIN (25 - 1120)
- IEC (30 - 1320)
- JIS (by type of battery)

Technical data	
Nominal voltage	12 V
Min./max. voltage measuring range	Yes
Min./max. voltage measuring range 2	Rubber



Art.No. 0772 800100

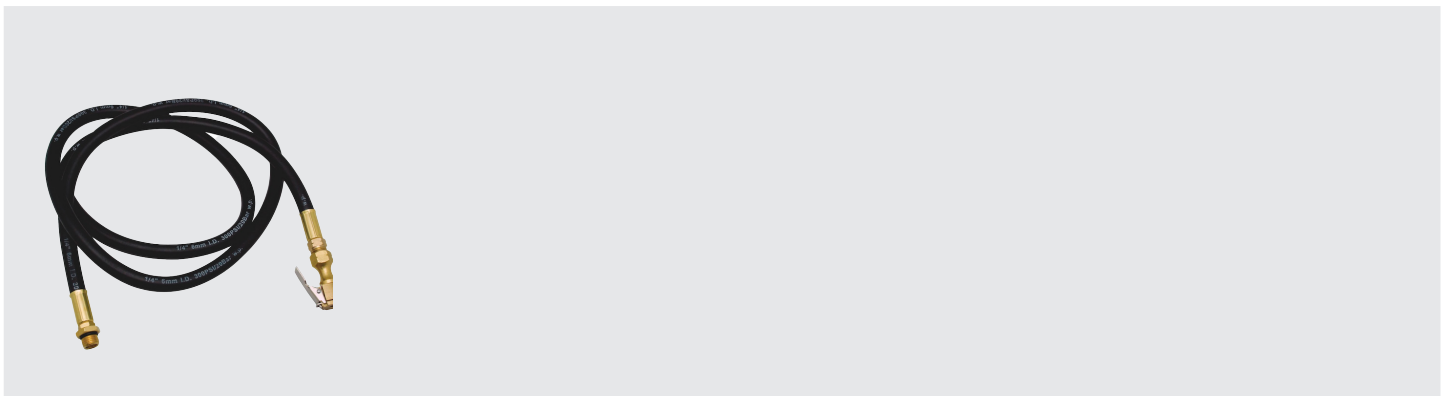
DIGITAL TYRE INFLATOR

Digital tyre inflator with easy-to-read LCD display

- 4 unit settings (BAR, PSI, KPA, KGF)
- 1.5 m hose
- Comfortable rubber grip
- Clip-on air chuck
- Grip mounted inflation/deflation lever
- Back light feature
- Measuring range: 0-12 BAR (0-175 PSI)
- Reading accuracy is 0.01 BAR (0.1 PSI)
- Max. inlet pressure is 15 BAR (218 PSI)
- Requires 2 x AAA Batteries (not included)
- Related Product:0827111



Technical data	
Product weight (per item)	1363 g



Art.No. 071554 071

TYRE INFLATOR WITH ANALOGUE CALIBRATION WITH 2C HANDLEPIECES

Easy-to-read precision manometer

- The large dial provides enough space for the scale chart

Comfortable operation

- The 1 m long filling hose enables easy measurements in hard-to-reach

Quick coupling to the tyre valve

- Connected to the valve within seconds thanks to quick-connect nipple

Comfortable handling

- 2C handle sits well in the hand and does not slip

Instructions

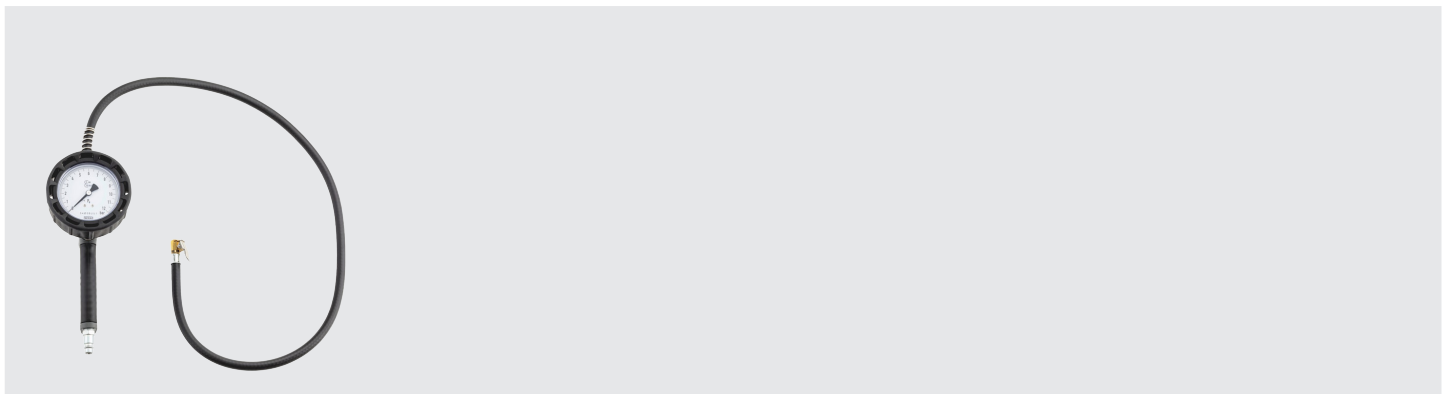
Attach plug-in nipple to tyre valve and twist by one half turn

Emptying: Push lever half-way

Filling: Push lever until it stops



Technical data	
Min./max. pressure measuring range	0-12 bar
Pressure conditions for measuring accuracy	< 0.08 bar: 0-4 bar < 0.16 bar: 4-10 bar < 0.25 bar: > 10 bar
Max. operating pressure	12 bar
Min./max. temperature conditions	-5 to 40 °C
Medium that can be measured	Air
Manometer diameter	80 MM
Hose length	1 m
Connection thread	1/4 inch
Product weight (per item)	588 G
Material of housing	Impact-resistant plastic
Max. pressure measuring range	12 bar
Material of handle	2-component plastic
Length x width x height	165 x 80 x 45 mm



Art.No. 071554 025

TYRE INFLATOR WITH DIAL-(0.5-12BAR)-1/4IN

Sturdy, functional tyre pressure pump approved for tachograph control

Sturdy

- Impact-resistant plastic with rubber sheath

Easy to operate

- +/- buttons
- Precision pressure gauge



Technical data	
Min./max. pressure measuring range	0.5-12 bar
Max. working pressure	16 bar
Min./max. temperature conditions	-10 to 50 °C
Hose length	530 mm
Pressure measuring accuracy	0.1 bar
P.Qty	1

ECCO CUTTER BLACK 18MM BLADE

Specification

- Handle: impact-resistant plastic
- Catch: via wheel
- 1 break-off blade, 18 mm, included
- 8 point breakaway





WÜRTH



ALLIAN
TRUCK PARTS



WÜRTH

WORKSHOP EQUIPMENT

**#READY
FOR WORK**

Würth Saudi Arabia LLC

King Fahad Branch Rd. Al Olaya District,
Street number 70, P.O.Box 503, 12214
Riyadh

Website: www.wurth.sa

Email: Info@wurth.sa

شركة وورث السعودية العربية ذ.م.م. طريق الملك فهد
الفرعي، حي العليا، شارع رقم ٧٠، ص.ب. ٥٠٣، ١٢٢١٤
الرياض

Reprint only with prior permission.

Printed on environmentally friendly paper.



CONSUMABLES

CABLE BAND, PLASTIC TONGUE-PLATNG-BLACK

Reliable cable tie for quickly organizing and bundling cables and wires

Long, reliable service life

High industrial quality for a long, reliable service life for indoor and outdoor use, depending on the version

Internal toothing on the tie for a secure grip on bundled cables

Natural-colored versions are only suitable for indoor use,

black versions are also suitable for temporary outdoor use due to their UV and weather resistance.

A carbon additive in the black cable ties delays the effect of UV rays on the material

Resistant to bases, oils, greases and vehicle fuels

Easy to use ; Can be installed directly by hand, no additional assembly tools are required

Areas of Application

- Switch cabinets
- Installation
- Automotive
- Automobile workshops
- Industrial workshops
- Elevator construction



Width mm	Length mm	Description	Art. No.	Min./max. bundle diameter (mm)
2.5	100	Cable band, plastic tongue-NATURAL PLAS 2.5X100	0502 11	1.6-20
2.5	100	Cable band, plastic tongue-PLATNG-BLACK-2,5X100	0502 111	1.6-20
3.6	140	Cable band, plastic tongue-PLATNG-NATURE-3,6X140	0502 12	1.6-30
3.6	140	Cable band, plastic tongue-PLATNG-BLACK-3,6x140	0502 121	1.6-30
3.5	200	Cable band, plastic tongue-PLATNG-NATURE-3.5x200	0502 13	1.6-40
3.5	200	Cable band, plastic tongue-PLATNG-BLACK-3.5X200	0502 131	1.6-40
3.6	280	Cable band, plastic tongue-PLATNG-NATURE-3,6X280	0502 135	1.6-75
3.6	280	Cable band, plastic tongue-PLATNG-BLACK-3,6X280	0502 1351	1.6-75
4.8	178	Cable band, plastic tongue-PLATNG-NATURE-4.8x178	0502 14	1.6-40
4.8	178	Cable band, plastic tongue-PLATNG-BLACK-4.8X178	0502 141	1.6-40
4.8	280	Cable band, plastic tongue-PLATNG-NATURE-4,8X280	0502 15	1.6-75
4.8	280	Cable band, plastic tongue-PLATNG-BLACK-4.8X280	0502 151	1.6-75
4.8	360	Cable band, plastic tongue-PLATNG-NATURE-4,8X360	0502 16	1.6-100
4.8	360	Cable band, plastic tongue-PLATNG-BLACK-4.8 X360	0502 161	1.6-100
7.8	370	Cable band, plastic tongue-PLATNG-NATURE-7,8X370	0502 18	1.6-100
7.8	370	Cable band, plastic tongue-PLATNG-BLACK-7.8X370	0502 181	1.6-100



PVC Insulating tape, electric

**Insulating tape, HIGH QUALITY, Adhesive tape,
for electrical use**

**Excellent adhesiveness and elasticity even
at low temperatures**

- Safe thanks to tested properties
- Flame-retardant

Safe and easy to use

- Tear-proof and resistant to ageing
- High degree of flexibility and adhesive strength
- Excellent moulding to different shapes
- High level of dielectric strength and mechanical protection

**Permanent material properties even at changing
and low temperatures**

Highly resistant to diluted acids and alkalis



Colour (Color)	Width	Length	Art. No.
Black	18 mm	10 m	0985 181001
Yellow	19 mm	5 m	0985 19052
Blue	19 mm	5 m	0985 19053
Red	19 mm	5 m	0985 19055

POLYESTER CLOTH ADHESIVE TAPE

For bundling and bandaging cable harnesses, especially where high temperatures can occur (e.g. in the engine compartment)

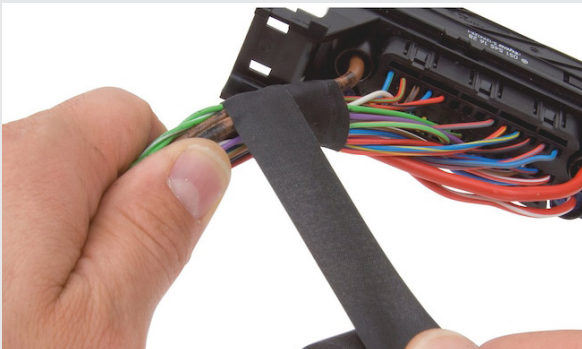
- Abrasion and tear resistant
- PVC-compatible

Details/Application

For bundling and bandaging cable harnesses, especially where high temperatures can occur (e.g. in the engine compartment)



Technical Data		
Art.No.	0771 100119	0771 100219
Adhesive base	Acrylate	Synthetic natural rubber
Backing material	Polyester	Woven polyester fleece
Min. longitudinal resistance to tearing	200 N/cm	30 N/cm
Min./max. temperature resistance	-40 to 150 °C	-40 to 105 °C
Length	25 m	10 m
Width	19 mm	19 mm
Thickness	0.27 mm	0.50 mm
Colour	Black	Black
Elongation at break	20%	10%





MY NOTES:

[illegible]



CONSUMABLES

**#READY
FOR WORK**

Würth Saudi Arabia LLC

King Fahad Branch Rd. Al Olaya District,
Street number 70, P.O.Box 503, 12214
Riyadh

Website: www.wurth.sa

Email: Info@wurth.sa

شركة وورث السعودية العربية ذ.م.م. طريق الملك فهد
الفرعي، حي العليا، شارع رقم ٧٠، ص.ب. ٥٠٣، ١٢٢١٤
الرياض

Reprint only with prior permission.

Printed on environmentally friendly paper.